

AMENDMENTS TO THE CHILDREN AND YOUNG PERSONS ACT (CYPA)

Better protection and rehabilitation for children and youths

The CYPA provides for the welfare, protection and rehabilitation of children and youths

- Children who face abuse or neglect in families that struggle with responsible parenting
- Youths who commit offences of varying severity
- Families who need guidance to strengthen parent-child relationships

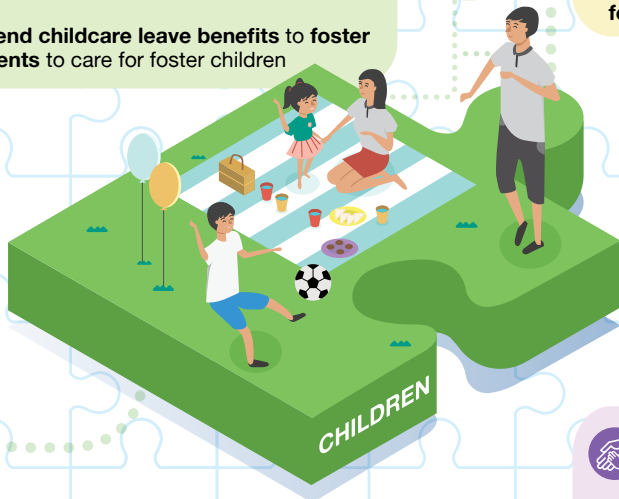
We have amended the CYPA to:



Protect children who face abuse or neglect

- **Extend protection** to abused or neglected children aged 16 to below 18
- **Introduce Enhanced Care and Protection Orders** to assure children of stability and certainty in care arrangements
- **Allow MSF and caregivers to make timely decisions** for children's development
- **Extend childcare leave benefits to foster parents** to care for foster children

Foster Parents



Help youths to start anew

- **Extend rehabilitation to youth offenders aged 16 to below 18** based on their different risks and needs
- **Allow youth offenders to declare that they do not have a criminal record**, if they successfully complete Youth Court orders
- **Protect youth offenders' identities for life**, unless they re-offend



Strengthen partnerships with the community to care for vulnerable children

- **Appoint and train volunteer welfare officers** to partner MSF to support vulnerable children
- **Provide peace of mind to volunteers and social service agencies by protecting them from legal liability** if they have acted in good faith and with reasonable care

Volunteer Welfare Officer



Guide families in parenting, with community support

- **Rename "Beyond Parental Control Orders" to "Family Guidance Orders" (FGO)** to reflect families' responsibilities in guiding children
- **Require parents, with their child, to complete a family programme** to address parent-child conflicts, before an FGO is applied for and granted
- **Allow parents to apply to Court for an FGO only if the child is aged below 16**, so as not to further strain family relationships

