

# ENABLING MASTERPLAN 2030

The Enabling Masterplan 2030 charts out our hopes and dreams of a more caring and inclusive Singapore in 2030.

Developed by, for, and with persons with disabilities and caregivers, it covers three strategic themes and 14 focal areas to enable persons with disabilities across all stages of life.

Together, let's build a more inclusive Singapore for 2030 and beyond.

## LEARNING

### Strengthen Support for Lifelong Learning

#### EARLY YEARS | Early Intervention

Expand **Development Support – Learning Support** programme to more preschools



**Inclusive Support Programme pilot** to integrate early childhood and early intervention services at preschools

**2 new Early Intervention centres** by mid-2023



#### SCHOOLING YEARS | Quality Inclusive Education

**5 new Special Education (SPED) schools** by 2030



**Build capacity of school personnel** in all mainstream schools through SkillsFuture for Educators framework

Enhanced educational experience through new **SPED teaching and learning syllabuses**



#### BEYOND SCHOOLING YEARS Opportunities and Resources for Lifelong Learning



**Enabling Skills Framework** to chart training and learning journeys



**Enabling Services Hubs pilot** to provide on-site learning

# LEARNING

## Enable Persons with Disabilities to Live Independently

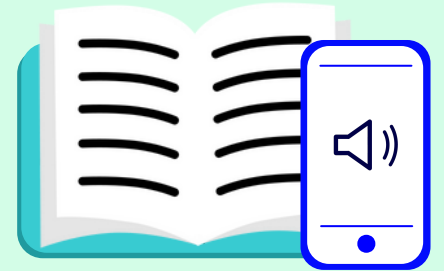
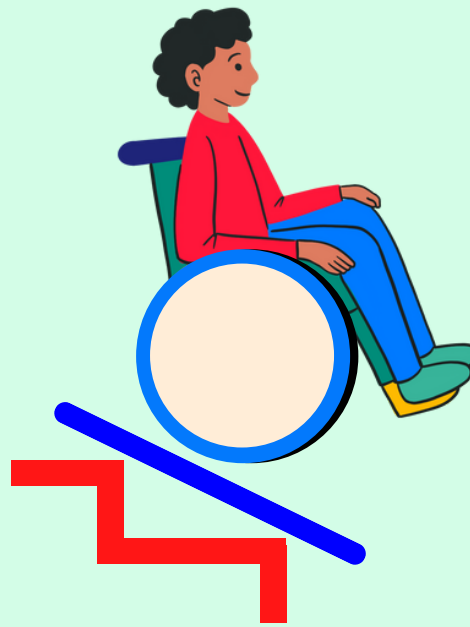
### EMPLOYMENT | Opportunities for Meaningful Employment

**Alternative employment models**  
(e.g. microjobs for persons with disabilities)



Increase number of **disability-inclusive employers**

**Enabling Business Hubs pilot** to provide customised support and structured work environments



### COMMUNITY LIVING Active Participation in Community Life



**Alternative housing and care models**  
for different profiles of persons with disabilities



### CAREGIVING SUPPORT Access to Support Services and Resources

**Enhanced community and peer support** for caregivers



### ASSISTIVE TECHNOLOGY Independent Living and Improved Connection to Community



**Increase Assistive Technology Assessment and Training** by Tech Able

**New drop-in respite care option** at Enabling Services Hubs

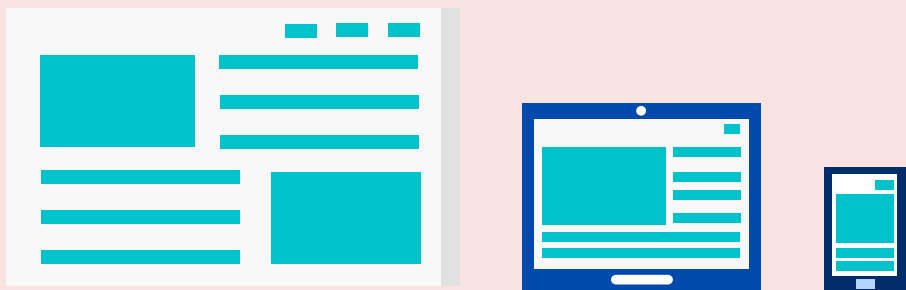


**Enhanced Home Caregiving Grant** from \$200 to \$400 per month by 2023

# CONNECTING

## Create Inclusive Physical and Social Environments

### NEWS & MEDIA | Greater Access to Information and Services

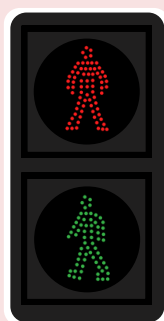


**100%** high-traffic government websites to be accessible by 2030

Increase accessibility to **free-to-air programmes** through subtitling, captioning and/or sign language interpretation



### TRANSPORT | Accessible Commuting Infrastructure



**24/7**

on-demand audible traffic signals



at **325** pedestrian crossings



### HEALTH

Quality Healthcare Services

**Family Practice Skills Course**

for General Practitioners to provide better care



### PUBLIC SPACES

More Accessible Physical Infrastructure

Legislation to **accelerate accessibility upgrading** in older buildings



### ARTS AND HERITAGE

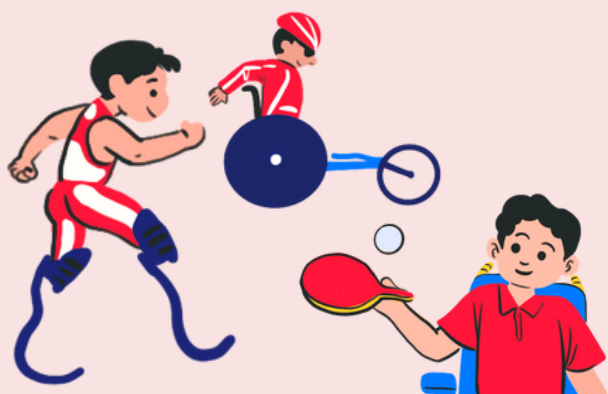
Inclusive Arts and Heritage Landscape

More **accessible programmes**



### SPORTS

More Opportunities for Participation



**Launched Para Sports Academy** in March 2022

### INCLUSIVE COMMUNITIES

Greater Disability Awareness



**More public education activities** in schools, workplaces and community



More opportunities for persons with disabilities to **collaborate and work within sector**

This is the first EMP with concrete indicators across the focal areas. For full report and updates on selected key indicators, visit [go.gov.sg/EMP2030](https://go.gov.sg/EMP2030)